

# ScopeLite 200



## The new ScopeLite 200 is the next evolution in fluorescence microscopy illumination

The ScopeLite 200 optimizes a pre-aligned, self-focusing 200-watt metal halide lamp. Combining the line output of a mercury lamp spectrum with the versatility of a broadband lamp, the ScopeLite's 200-watt metal halide lamp is ideal for a multitude of applications ranging from epifluorescence microscopy to cosmetic dentistry.

ScopeLite 200 combines the most power and uniformity available for microscope illumination.

- Stable DC operation
- Snap-in lamp replacement
- Pre-aligned, Quick Release liquid light guide and lamp
- Illumination power adjustment standard
- Ultra stable bulb output
- TTL operated mechanical shutter
- Intensity control
- Choice of microscope



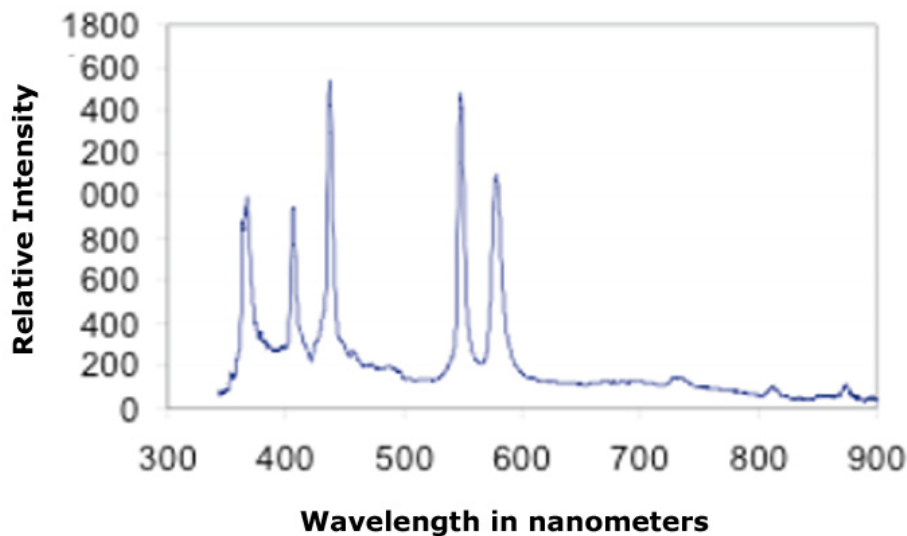
**OPTICAL BUILDING BLOCKS CORPORATION**

# ScopeLite 200

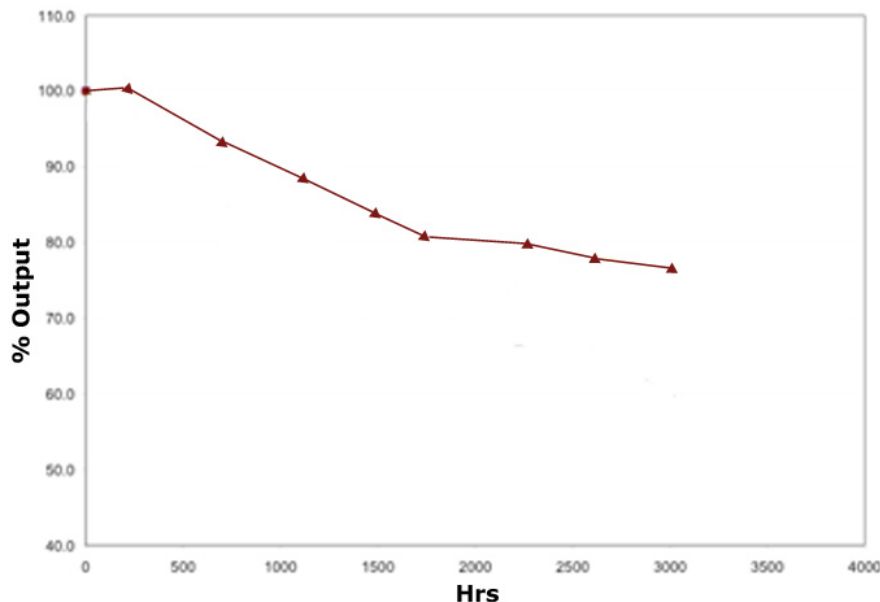
The typical lamp life is 2000 hours. Even after 2000 hours, more than 70 percent of the lamp's original power output still remains, allowing for reliability and constant intensity. Every metal halide lamp has an on-board temperature sensor to shut down if overheating occurs. The ScopeLite 200 displays this information on the front panel, allowing you to know the lamp hours used. When that time comes, lamp replacement is quick and easy. The ScopeLite feature a side panel that opens and allows easy access to the lamp which snaps into place in seconds!

## Lamp Output

**Spectral Distribution of Lamp Output**



## Over 2000 Hours of Operation!



The data above shows lamp output power only diminishes to 70% after 2000 hours

## Features and Benefits

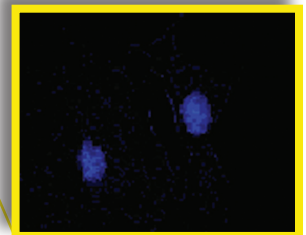
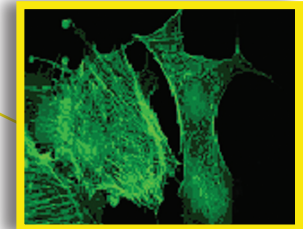
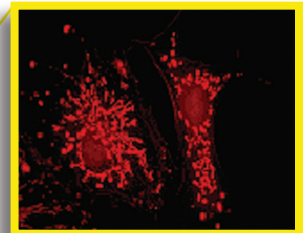
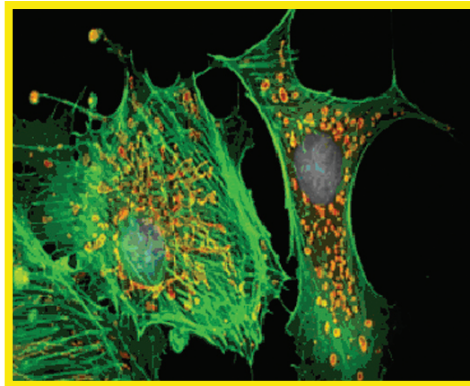
- **Stable DC Operation**  
No flicker due to AC output
- **Snap-in lamp replacement**  
Pre-aligned, self-focusing lamp for fast, accurate, and easy bulb replacement
- **Quick release coupling**  
Self-aligning and focused snap-in liquid light guide adaptor for fast interchange of guides
- **Built-in air-cooling**  
No added cost or inconvenience of water-cooling
- **Lamp life tracked**  
On front panel insuring you will never use an expired lamp
- **Intelligent lamp design**  
Each lamp has a temperature sensor to protect from overheating
- **Intensity control**  
Five preset positions 100%, 75%, 50%, 25% and block. You have control of the power
- **Choice of microscope**  
The ScopeLite 200 comes standard with your choice of any standard manufacturer's microscope; the coupling optics provide a uniform field of view for direct or EPI ports
- **Small footprint**  
Saves valuable lab space

## Applications

- Epifluorescence Microscopy
- **Biotechnology:** MicroArray
- **Industrial:** UV Curing
- Machine Vision
- Cosmetic Dentistry
- **Absorption Microscopy:** Photodynamic therapy
- **Medical:** Endoscope Light Source
- **Entertainment:** Projection
- And Many More...

ScopeLite 200 combines the most power and uniformity available for microscope illumination.

- New high power 200-watt metal halide lamp
- Long lamp life of 2000 hours
- All-in-one solution package
- Pre-aligned, Quick Release liquid light guide and lamp
- Illumination power adjustment standard
- Ultra stable bulb output
- TTL operated mechanical shutter



**Ideal for RGB Imaging!**

# ScopeLite 200

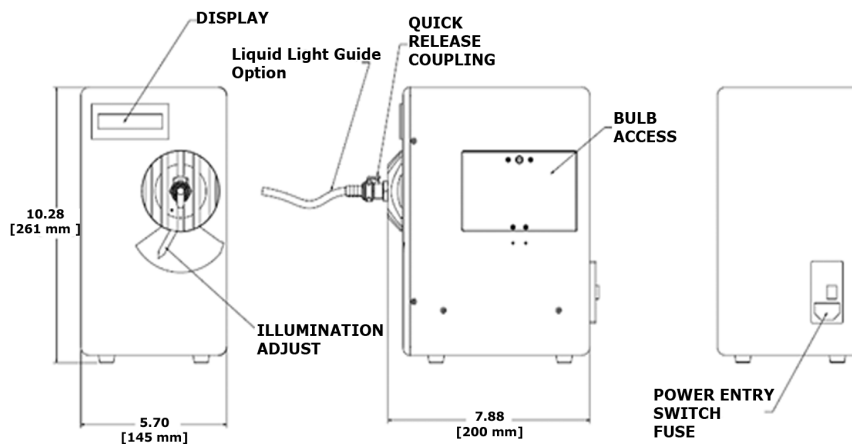
## Specifications

- **Power Supply:** Isolated, switch mode 85 to 260 vac, 50 or 60 Hz universal input, DC output to lamp
- **Igniter:** Mounted internally on the power supply
- **Lamp:** 200-watt metal halide with built-in reflector
- **Lamp Life:** 2000 hours typical
- **Lamp Warm-up Time:** 2 minutes
- **Cooling:** Air-cooled by internal fan
- **Display Panel:** LCD display
- **Liquid Light Guide:** 2-meter (length) x 2 mm diameter) LLG
- **Liquid Light Guide Coupling:** Thumb release and snap-in release mechanism
- **Illumination Adjustment:** 5 preset apertures: block, 25%, 50%, 75%, and 100%
- **Panel Control:** ON/OFF switch, shutter and starter button, TTL input
- **TTL Operated Shutter Mechanical:** No need to photo bleach your sample
- **Certification:** CE
- **Warranty:** 1 year (excludes lamp and liquid light guide)

Disclaimer:

\* Hg-Lamps contain Mercury and must be disposed in accordance with the disposal laws. For more information visit [www.lamprecycle.org](http://www.lamprecycle.org)

\* All specifications subject to change without notice



## Contact OBB Corporation



OBB Corp. 300 Birmingham Road, PO Box 186 Birmingham, NJ 08011  
Tel: 609-894-1541, Fax: 609-784-7809  
E-mail: [contact@OBB1.com](mailto:contact@OBB1.com), [www.OBB1.com](http://www.OBB1.com)